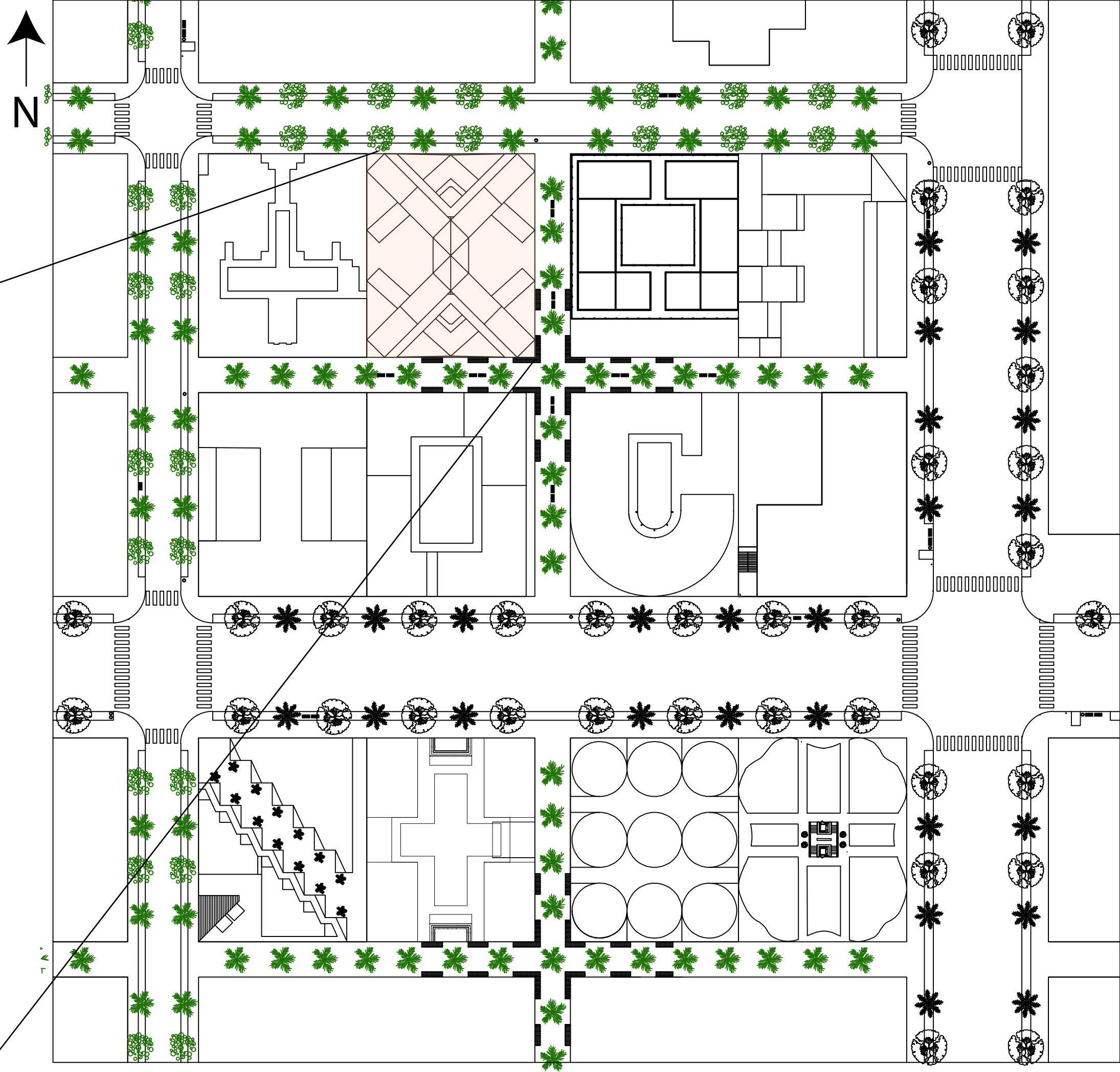
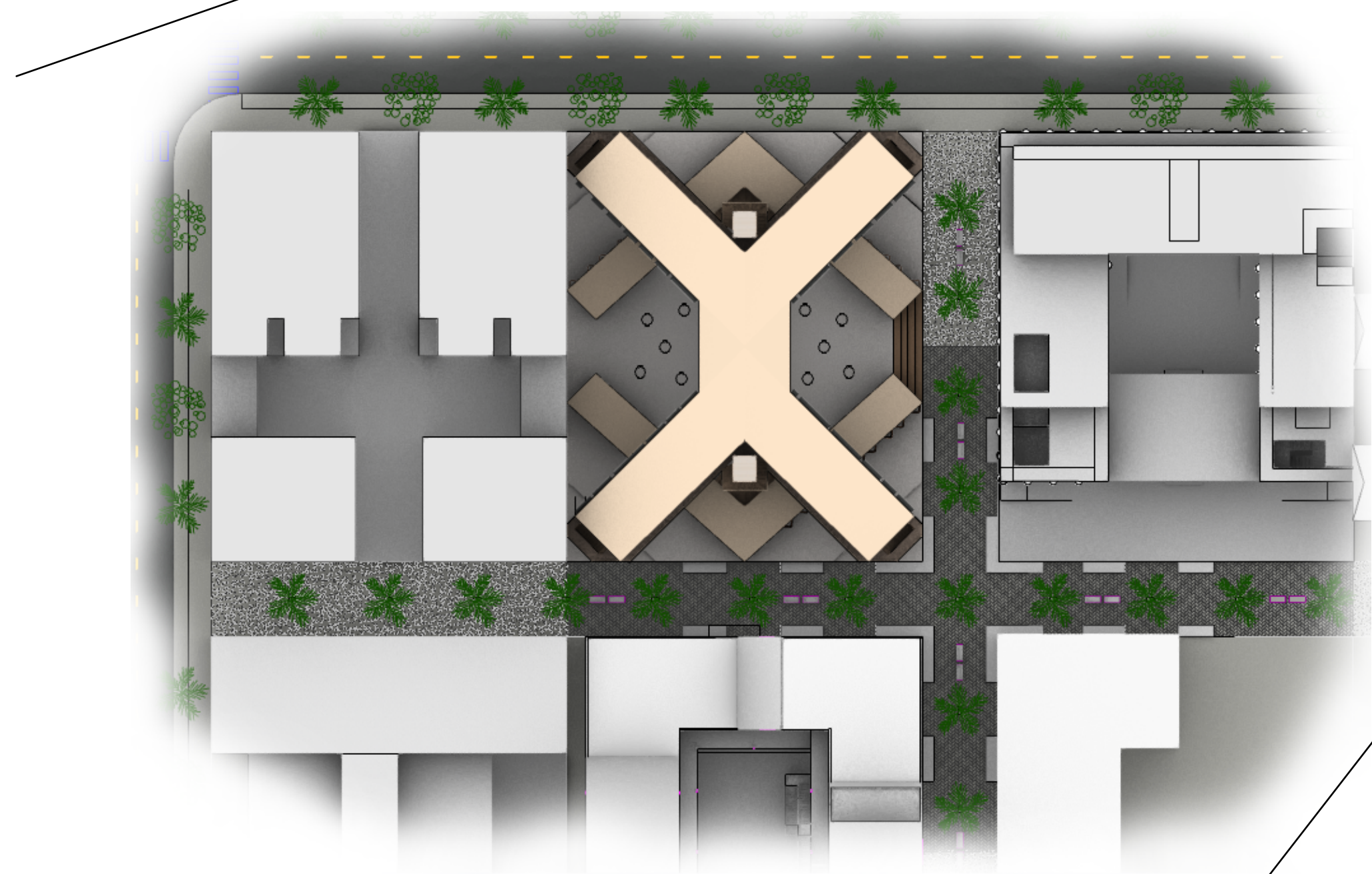


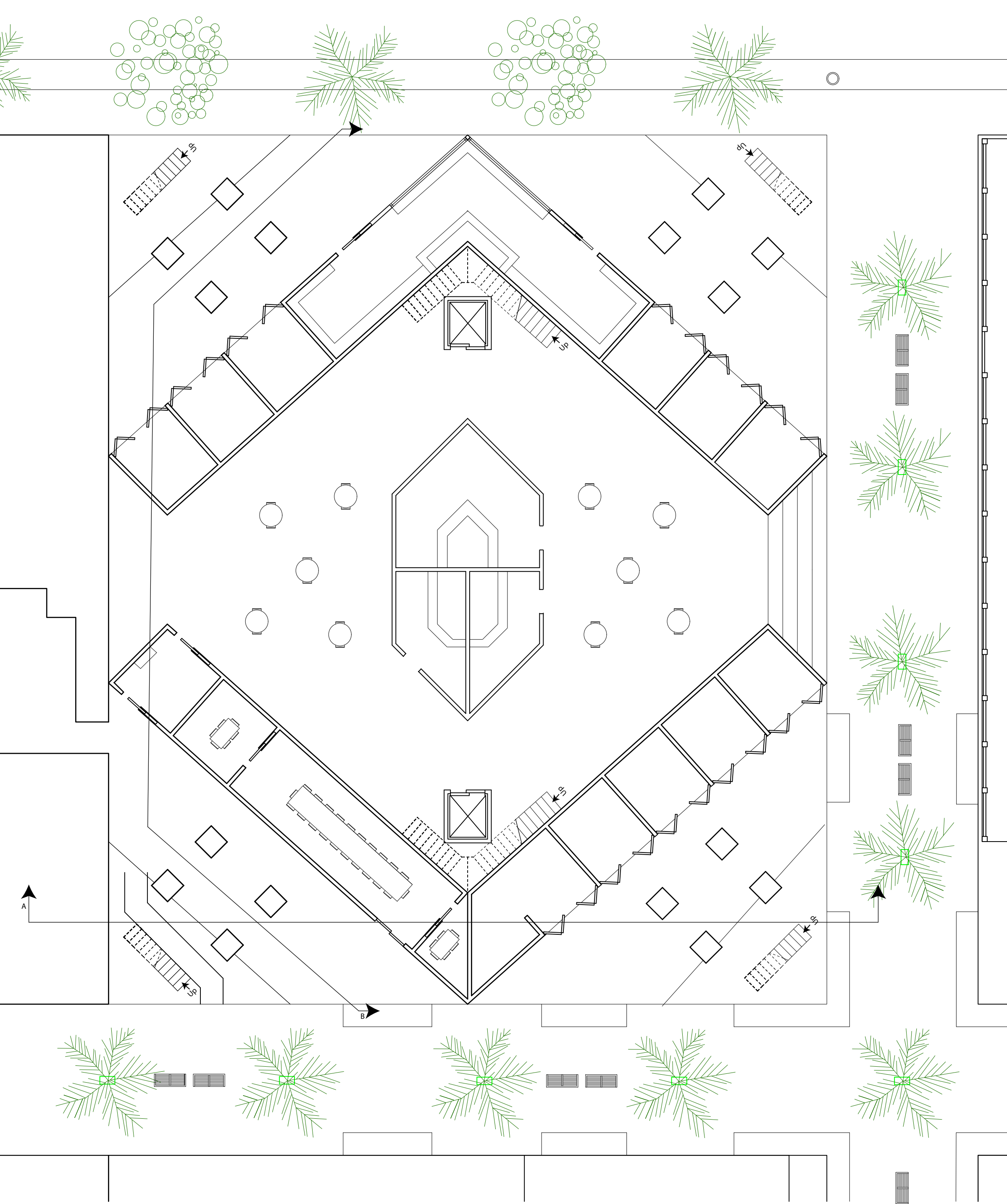
New Life In The Mudd

Abdallah Zaidan

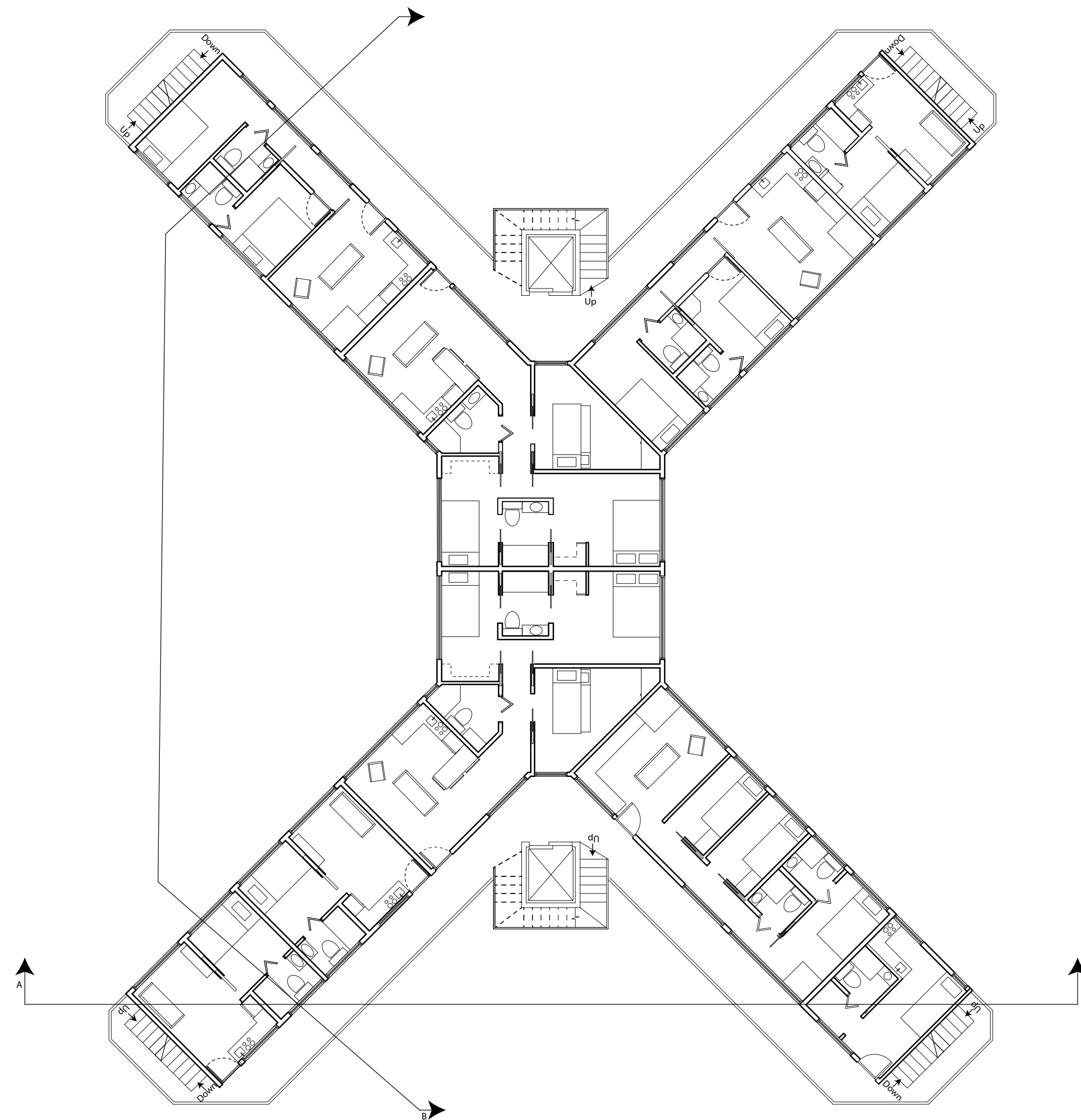
Twelve empty land lots in the Bahamas were given to the ARC Design IV students. The prompt was to design an affordable housing neighborhood. Each student was assigned their own lot, and therefore had their own design. I was assigned lot #2, which is bounded by a narrow street on the north, a pedestrian walkway on the east and south, and another lot on the west. The concept behind my design was to create a form that distinguished the separation between retail and residence. This explains the reasoning for the opposing shapes of the ground floor versus the residential floors. Next, I began considering the idea of cross ventilation, which ultimately led to my decision to create long thin bars of building in order to allow air to flow freely and equally through every unit. The angle of these bars was decided as it decreases the amount of disruption from the other bars, and other buildings. In addition, it allows for mor sunlight to enter the units, and ultimately a less obstructed view.



General Information	
Built Retail Space -	1200 sq. ft
Residential Space -	11,430 sq. ft
Number of Units -	27

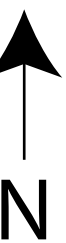
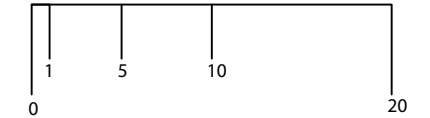


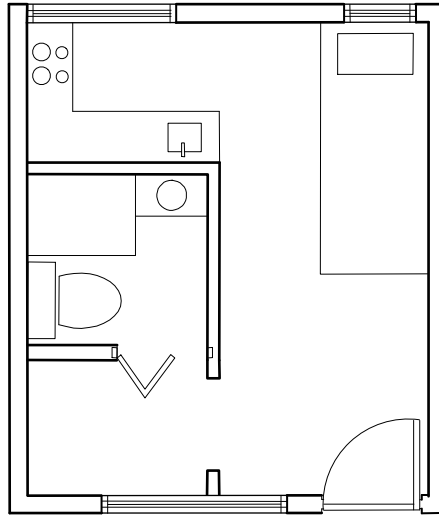
Ground Floor



2nd ,3rd & 4th Floor

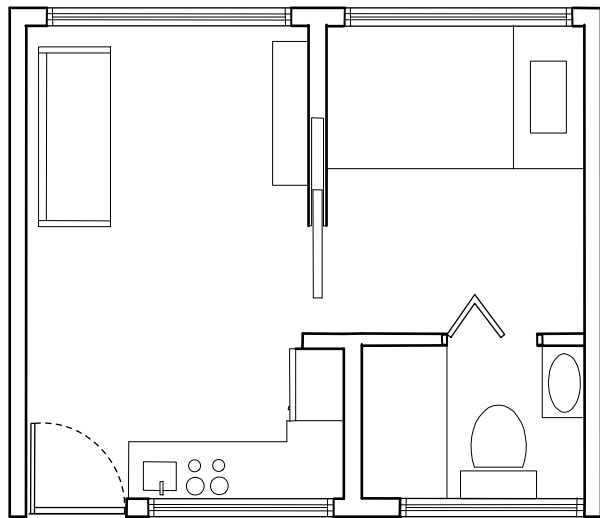
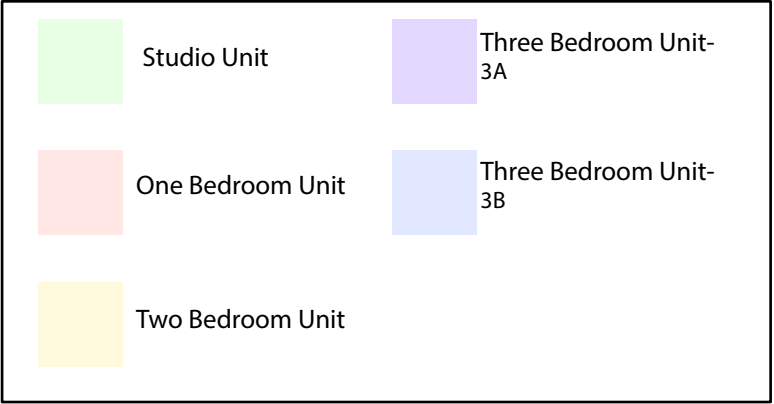
Scale: 1' = 3/32"



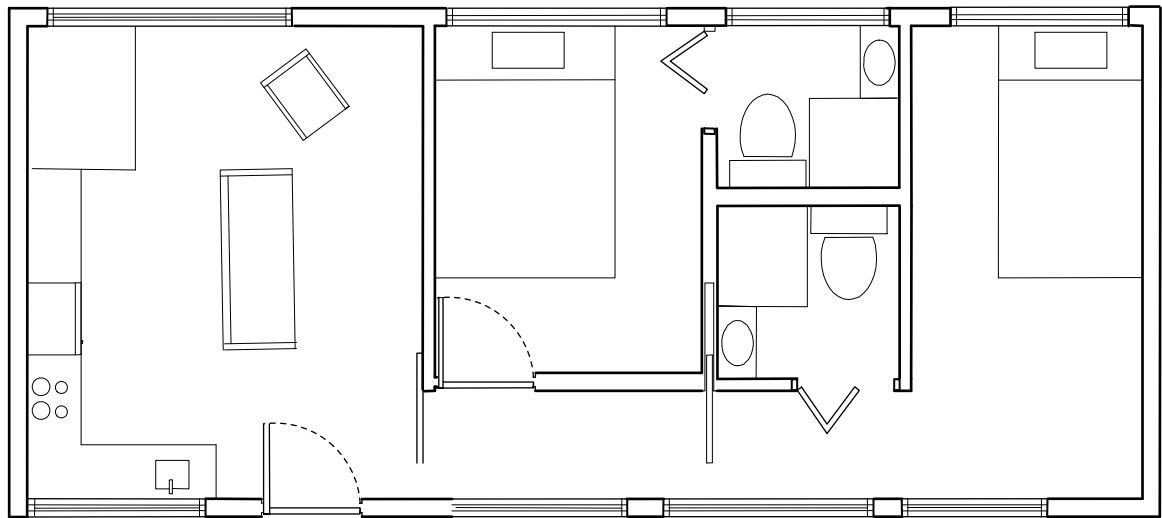


Studio Unit
210 sq. ft

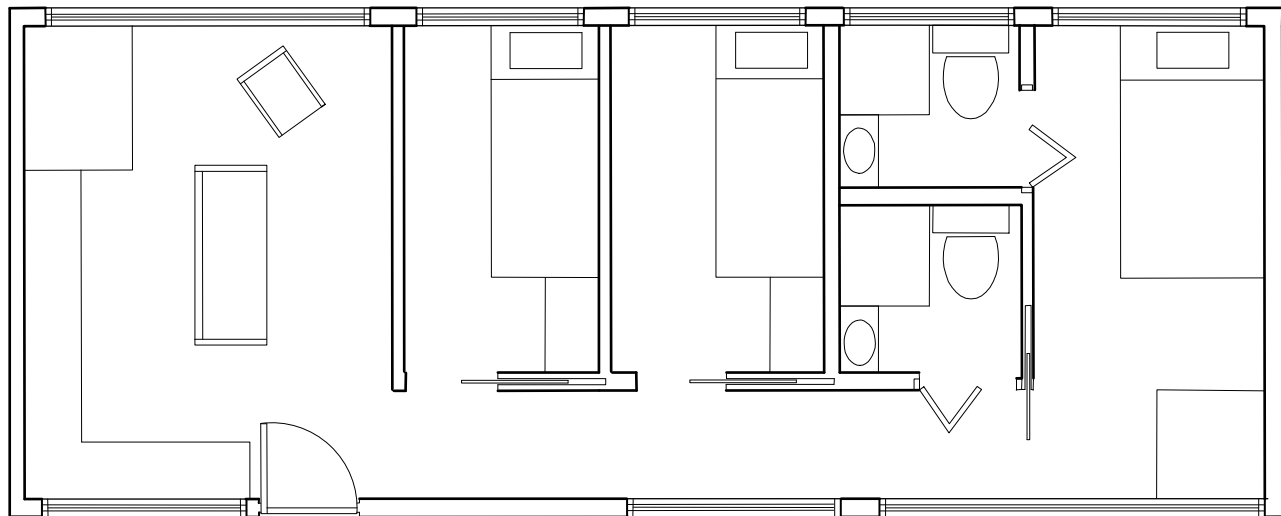
Unit Style	Quantity	% of Area
Studio Unit	3	11.1%
One Bedroom Unit	9	33.3%
Two Bedroom Unit	6	22.2%
Three Bedroom Unit	9	33.3%



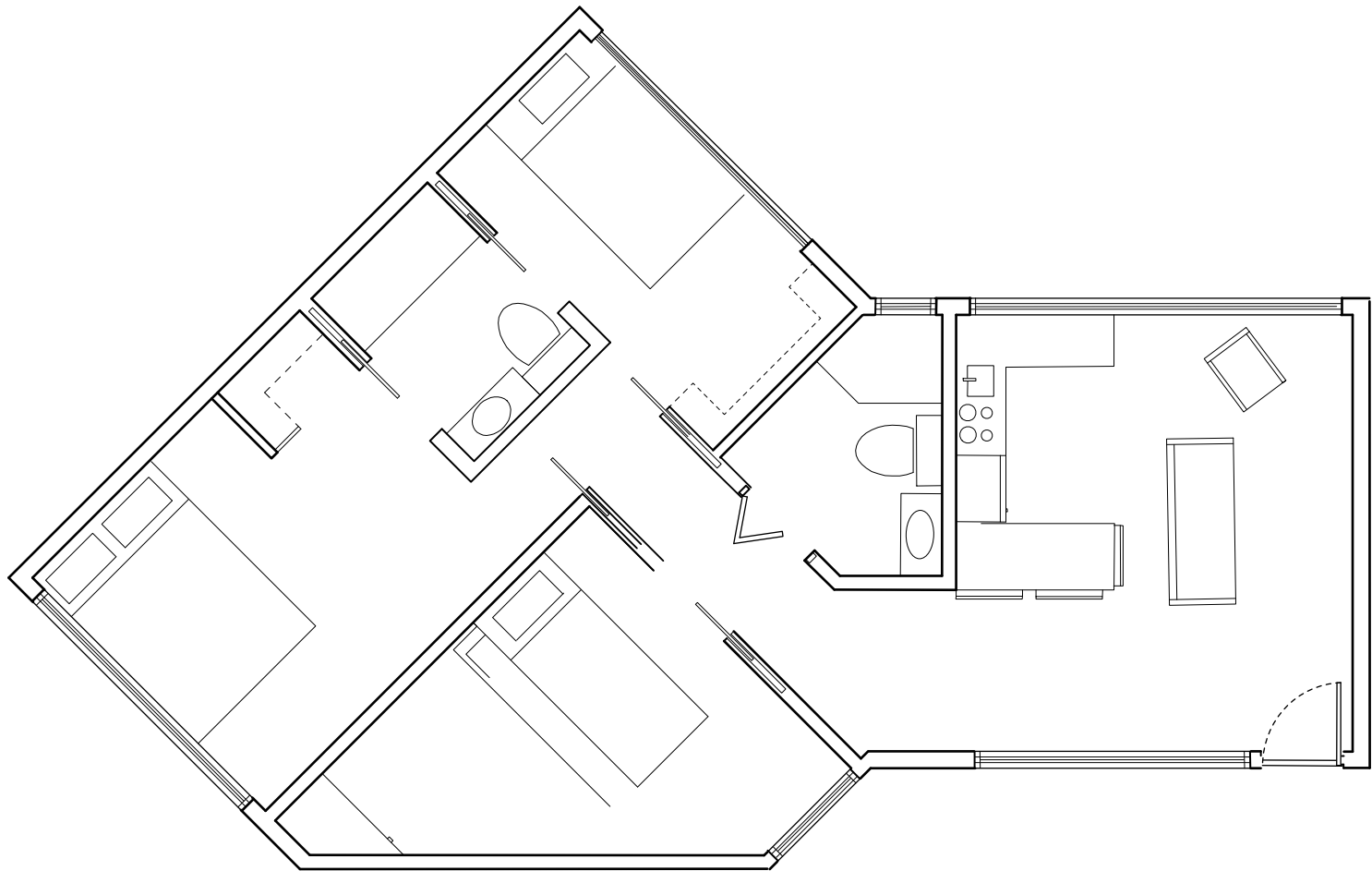
One Bedroom Unit
260 sq. ft



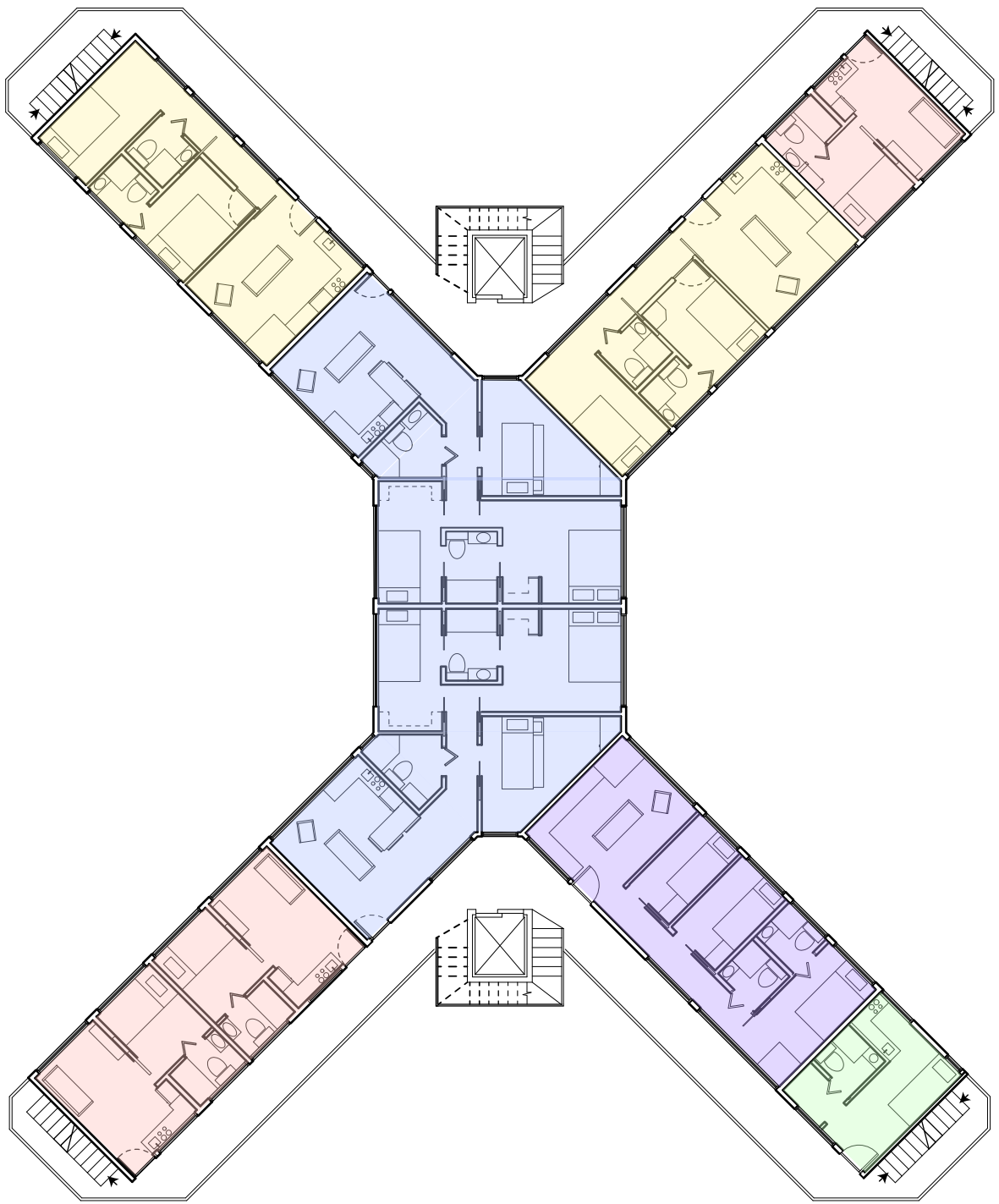
Two Bedroom Unit
480 sq. ft



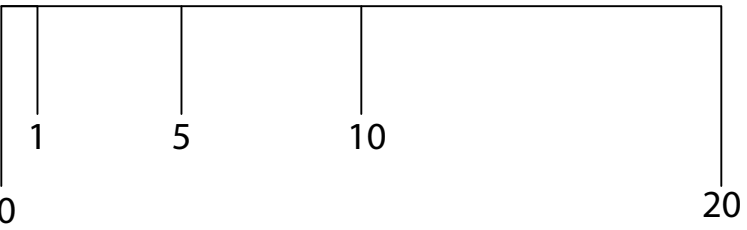
Three Bedroom Unit, 3A
520 sq. ft

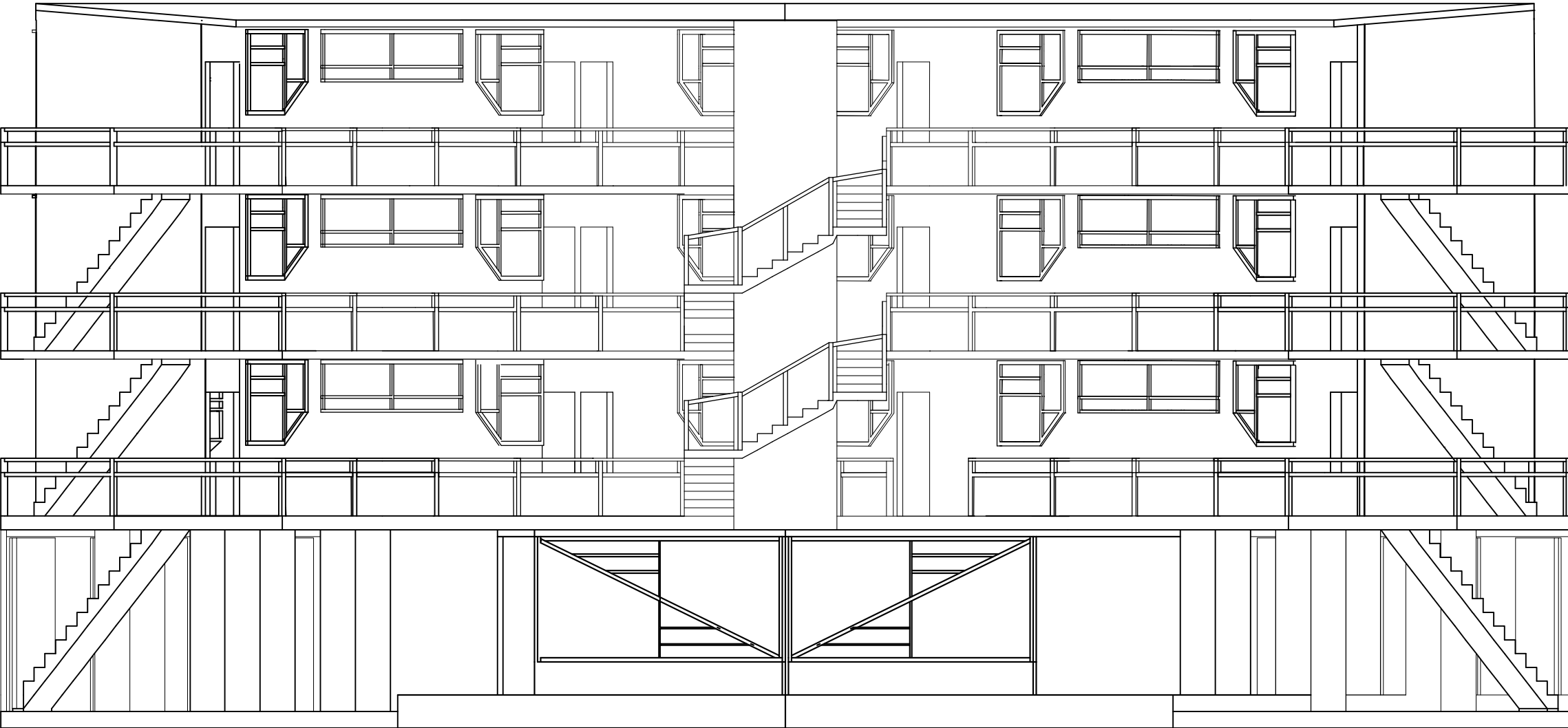


Three Bedroom Unit, 3B
670 sq. ft

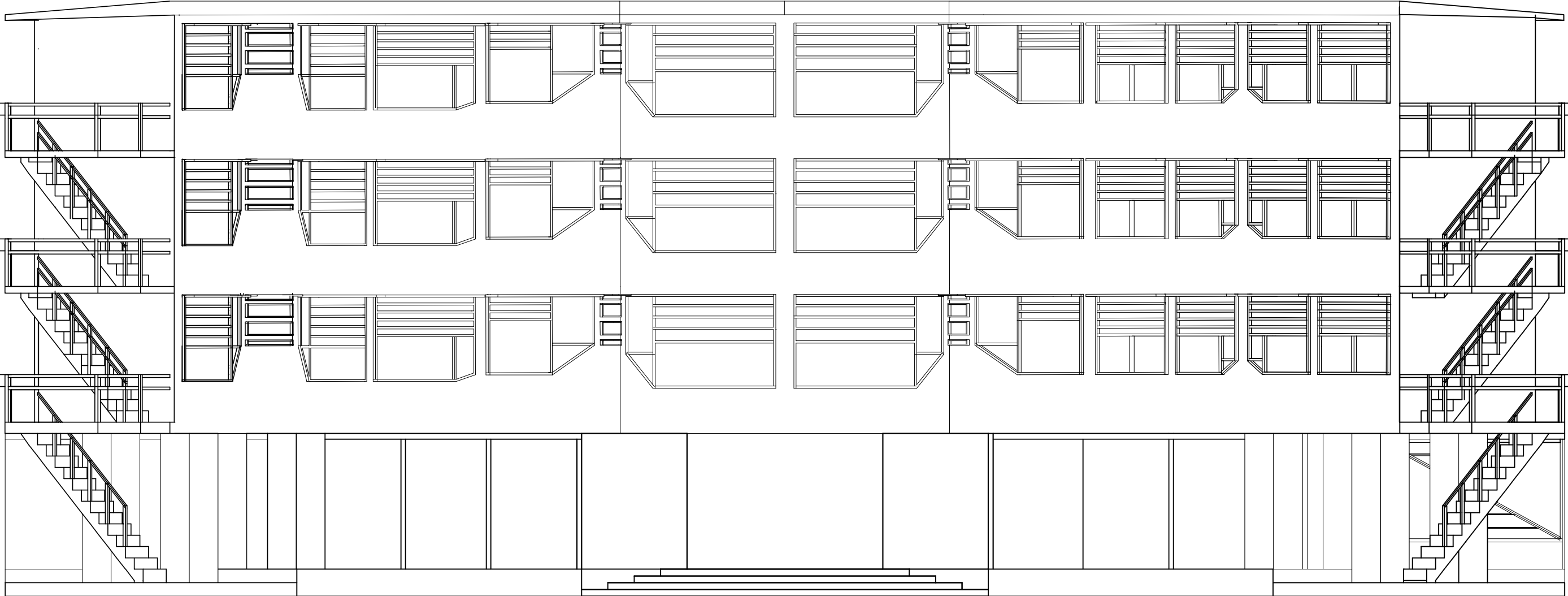


Scale: 1' = 3/16"



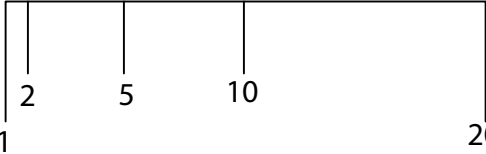


Northern Elevation



Eastern Elevation

Scale: 1' = 1/8"



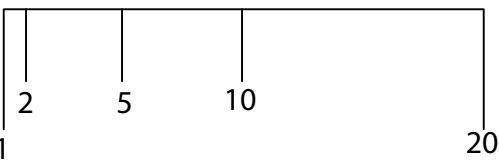


Section A



Section B

Scale: 1' = 1/8"





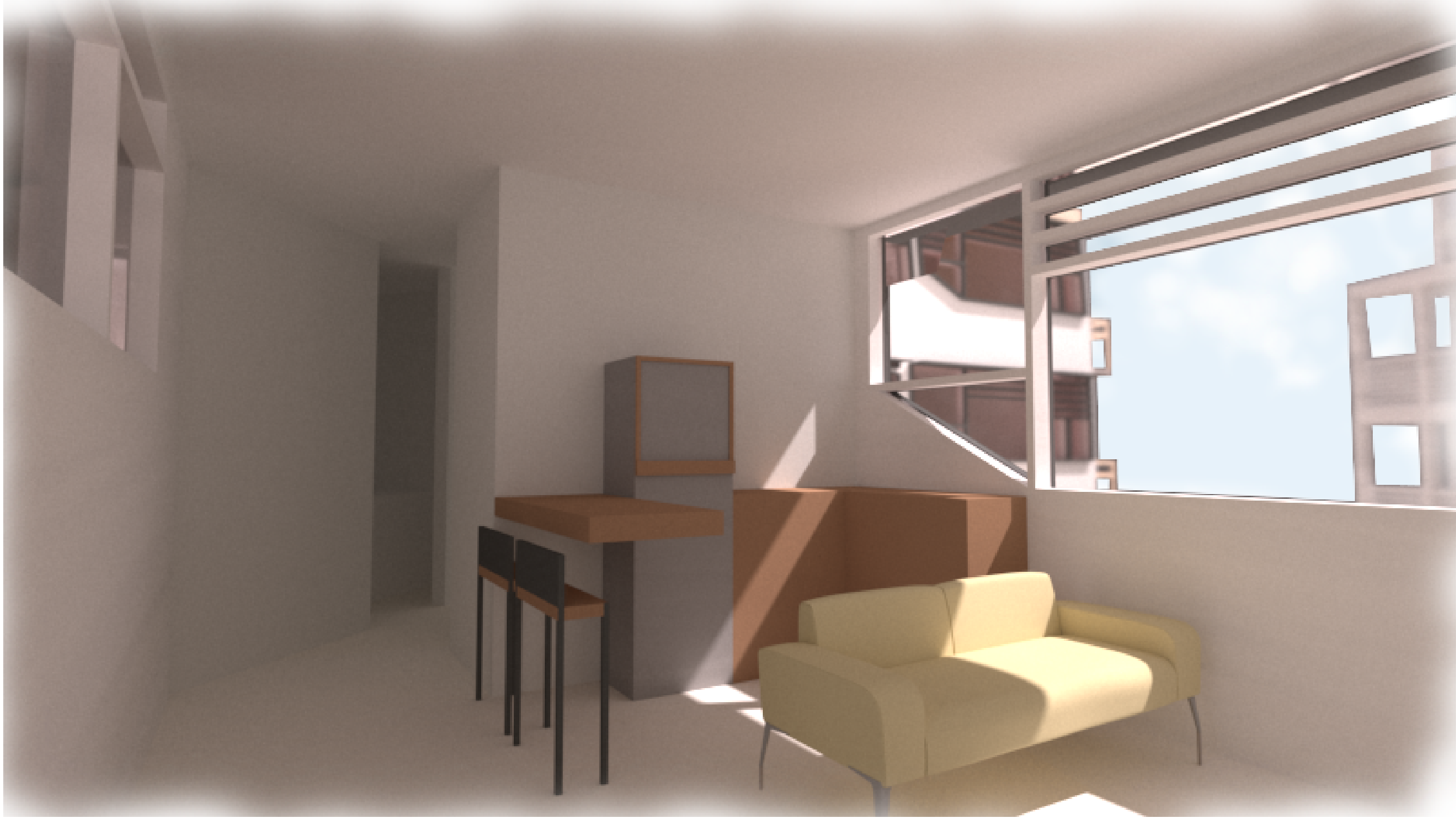
NE Street Side Perspective



NW Street Side Perspective



SE Pedestrian Walkway Perspective



Unit 3A Interior Perspective